



**HERCULUX** Chengdu HercuLux Photoelectric  
**恒坤光电** Technology Co.,Ltd  
**Product Approval**

Approval number:

Customer:

Manufacturer: Chengdu HercuLux Photoelectric Technology Co.,Ltd

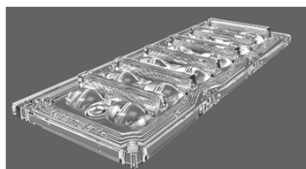
PN	Code	Product
HK-173@10-40X80-5050-#0-1g-12	1. 02. 81467	HK 12in1-TYPE I lens
HK-173@11-50x148-5050-#0-1g-12	1. 02. 81489	HK 12in1-TYPE II lens
HK-173@12-60X150-5050-#0-1g-12	1. 02. 81415	HK 12in1-5050-TYPE3 lens
HK-173@10-30X140-5050-#0-1g-12	1. 02. 81482	HK 12in1-TYPEIV lens
HK-173@08-140-5050-#0-1g-12	1. 02. 81453	HK 12in1-TYPE V lens

Synthetic information: 1.07.81418\_HK-166@03-0223-S

T1



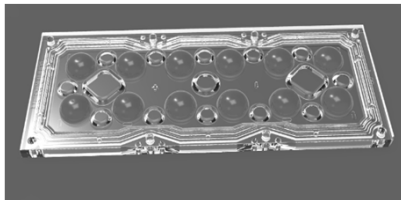
T2



T3



T4



T5



Supplier confirmation				Client confirmation			
Proposed		DATE		Qualified <input type="checkbox"/>		DATE	
Project manager		DATE		Unqualified <input type="checkbox"/>		DATE	
Audit		DATE		Audit		DATE	
Approved		DATE		Approved		DATE	
Stamp		DATE		Stamp		DATE	

(Confirmation of acceptance by both parties must be signed and sealed)

Factory: Chengdu Shuangliu District, lot industrial park 2 road HercuLux Photoelectric Park

Phone: 028-85887727 (801) 028-85887990 (801)

Fax: 028-85887730

www.hkoptics.com

Sales Dept: Shenzhen Nanshan District Nanshan Cloud Valley Innovation Industrial Park Comprehensive Service Building,

TEL: 0755-2937 1541

FAX: 0755-2907 5140

\*Approval In duplicate, for both supplier and customer.



**HERCULUX**  
恒坤光电

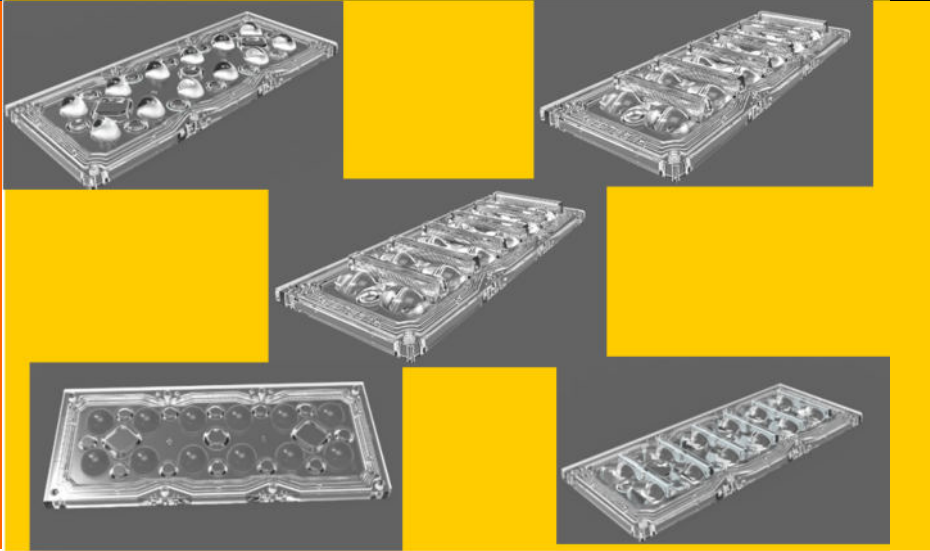
# Product Approval

TEL: 0755-2937 1541

FAX: 0755-2907 5140

www.hkoptics.com

Date updated: 2023/9/25

Product Picture:	
PN:	HK-173@10-40X80-5050-#0-1g-12
Size(L*W*H/Φ*H):	L: 173mm*W:71.4mm*H:10.24mm
Material:	PMMA/PC
Efficiency:	\
Temperature(Topr):	PMMA(-40°C to +80°C)\PC(-40°C to +120°C)
FWHM:	T1, T2, T3, T4, T5,
Matched LES:	LUXEON 5050

Please use this product within the permitted range and environment according to the structure and material of the product. If the usage exceeds the recommended value, please test and verify by yourself. If the product is damaged due to out-of-range use, our company will not be responsible for the warranty.

#### Product material:

Customized products: The specifications and models of materials used are subject to the agreement between the two parties.

Conventional products: As a product that we continuously research and improve, under the premise of ensuring the quality and availability of the product, our company reserves the right to change the material. If the material specification and model change, without prior notice.

#### product data:

The measurement data and dimensional tolerances of the 2D drawings in the product data sheet of this acknowledgement are for reference only, and the final size shall prevail in kind.

The measurement data presented in this acknowledgment is a performance test of the product based on our company's internal test conditions and quality requirements, and the reported data is a typical value of the average results of multiple measurements. Therefore, in some cases, the actual product may deviate from the data provided. We reserve the right to notify you in advance of this data.

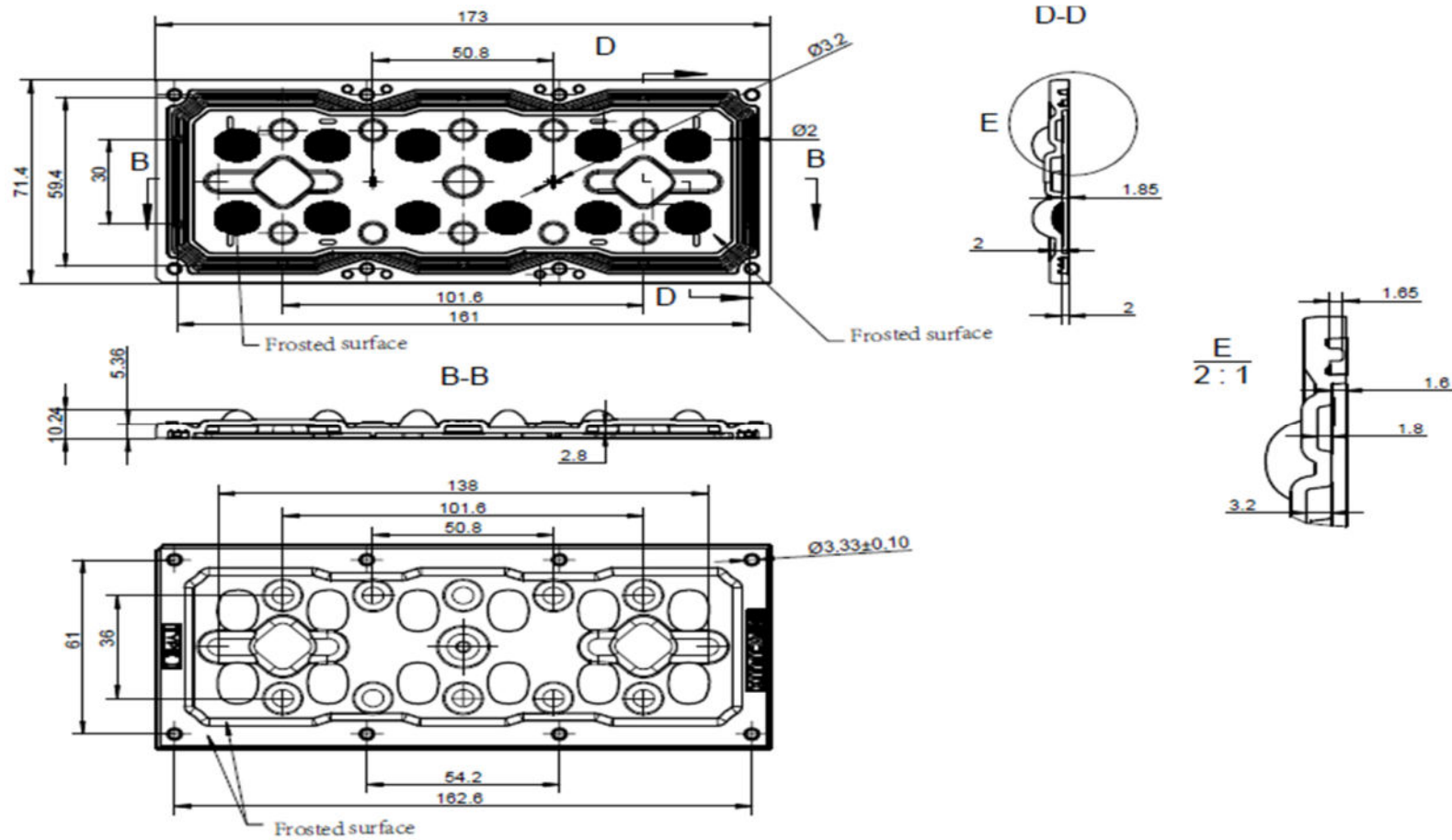
#### Product changes and improvements:

Changes and improvements of customized products are subject to the agreement between the two parties in the contract or technical documents.

As the conventional products that we continue to research and improve, our company reserves the right to make technical changes to its products, and reserves the right to make changes to data resulting from improvements without prior notice.

#### Operation cautions:

1. Please wear clean gloves during product assembly to prevent product surface contamination.
2. Try to avoid touching the optical surface of the lens when taking the lens.
3. When the surface of the product is polluted, please wipe it gently with a soft cotton cloth dipped in analytically pure neutral solvent. It is forbidden to use industrial solvents (alcohol, isopropanol, acetone, ether, toluene, xylene, carbon tetrachloride, MMA monomer, etc.) wipe.
4. The lens made of PC should not be exposed to direct sunlight in the storage and use environment. If the lens turns yellow or cracks due to long-term sunlight exposure, our company will not be responsible for the warranty.

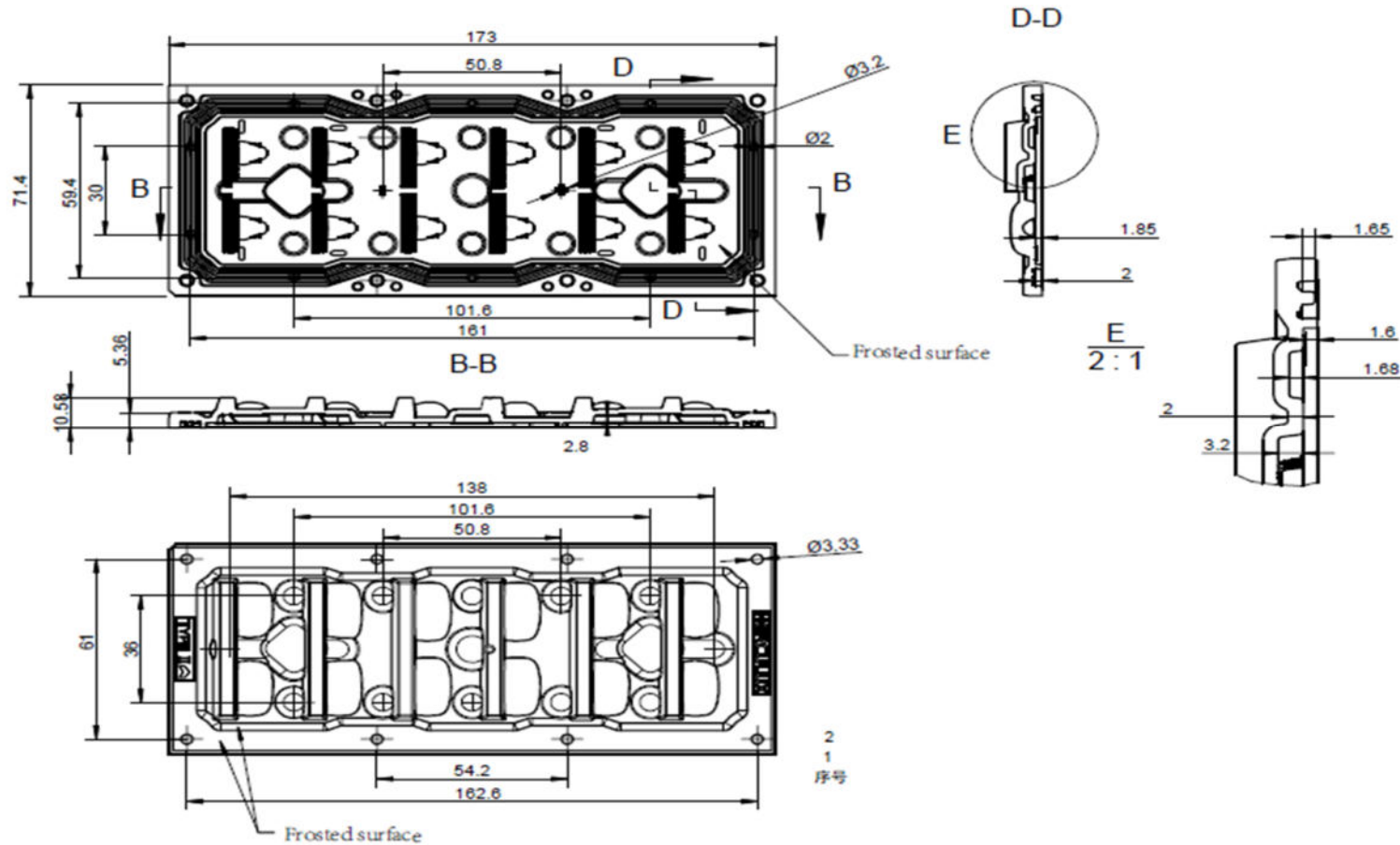


**Technical remark:**

1. The 3D map is not indicated for rounded corners and draft angle.
2. The dimensional tolerances are not specified according to GB/T 14486 2008 MT5.
3. The surface has no flash, shrinkage, bubbles and other defects.

Optical design			HK-173@10-40X80-5050-#0-1g-12		
structure design			HK 12in1-TYPE I lens		
Review			number of drawing	qty	weight
Validation			Material: PMMA/PC		
			CDHK		

MT5 Tolerance table (mm)	Basic size	<3	3~10	24~65	65~140	140~250	250~450	>450	
	tolerance value	±0.1	±0.15	±0.35	±0.50	±0.80	±1.2	±2.0	

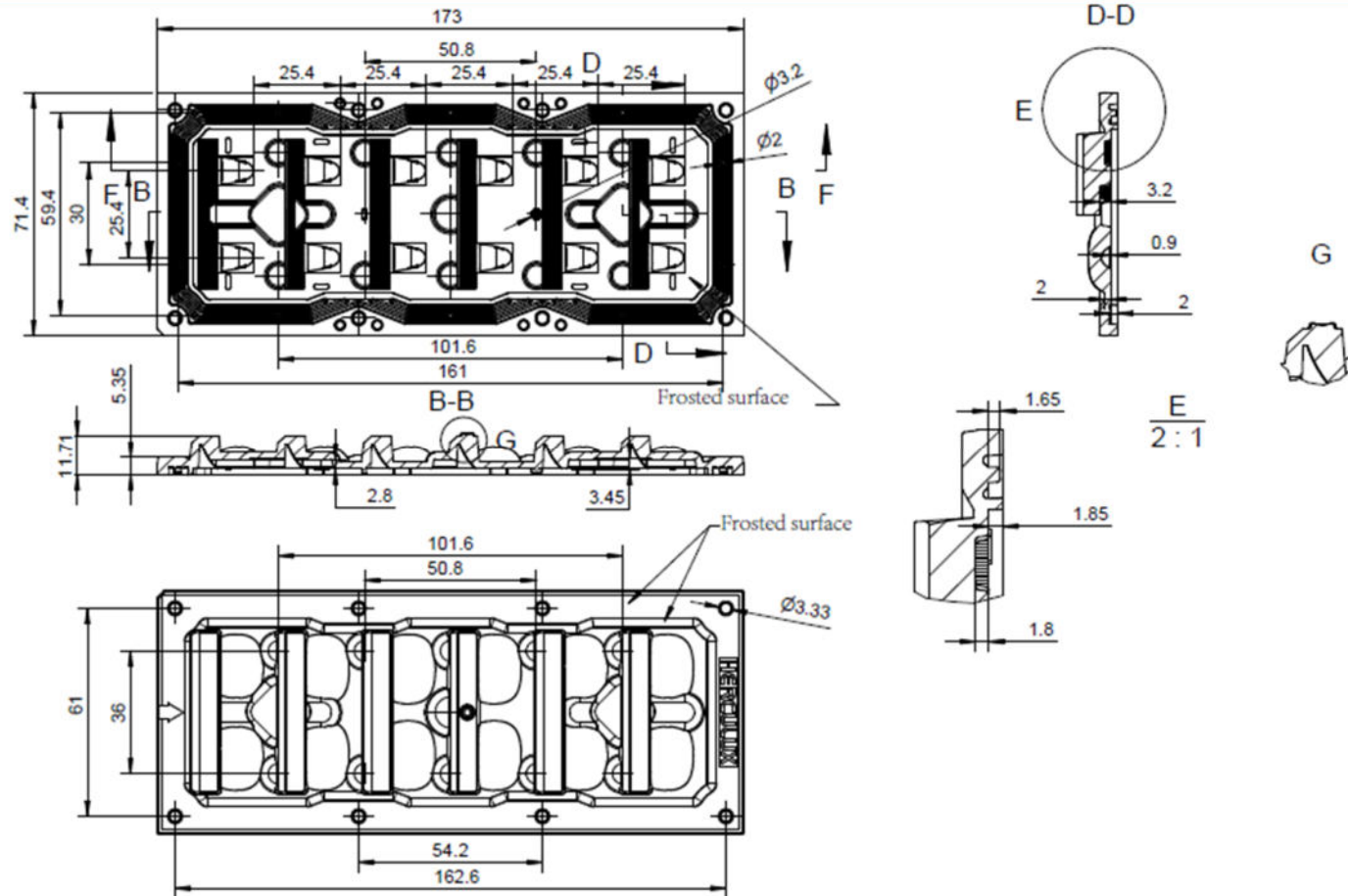


**Technical remark:**

1. The 3D map is not indicated for rounded corners and draft angle.
2. The dimensional tolerances are not specified according to GB/T 14486 2008 MT5.
3. The surface has no flash, shrinkage, bubbles and other defects.

Optical design			HK 12in1-TYPE II lens		HK-173@11-50x148-5050-#0-1g-12	
structure design			HK 12in1-TYPE II lens		1.02.81489	
Review			number of drawing	qty	weight	
Validation			Material:	PMMA/PC	CDHK	

MT5 Tolerance table (mm)	Basic size	<3	3~10	24~65	65~140	140~250	250~450	>450	
	olerance valu	±0.1	±0.15	±0.35	±0.50	±0.80	±1.2	±2.0	

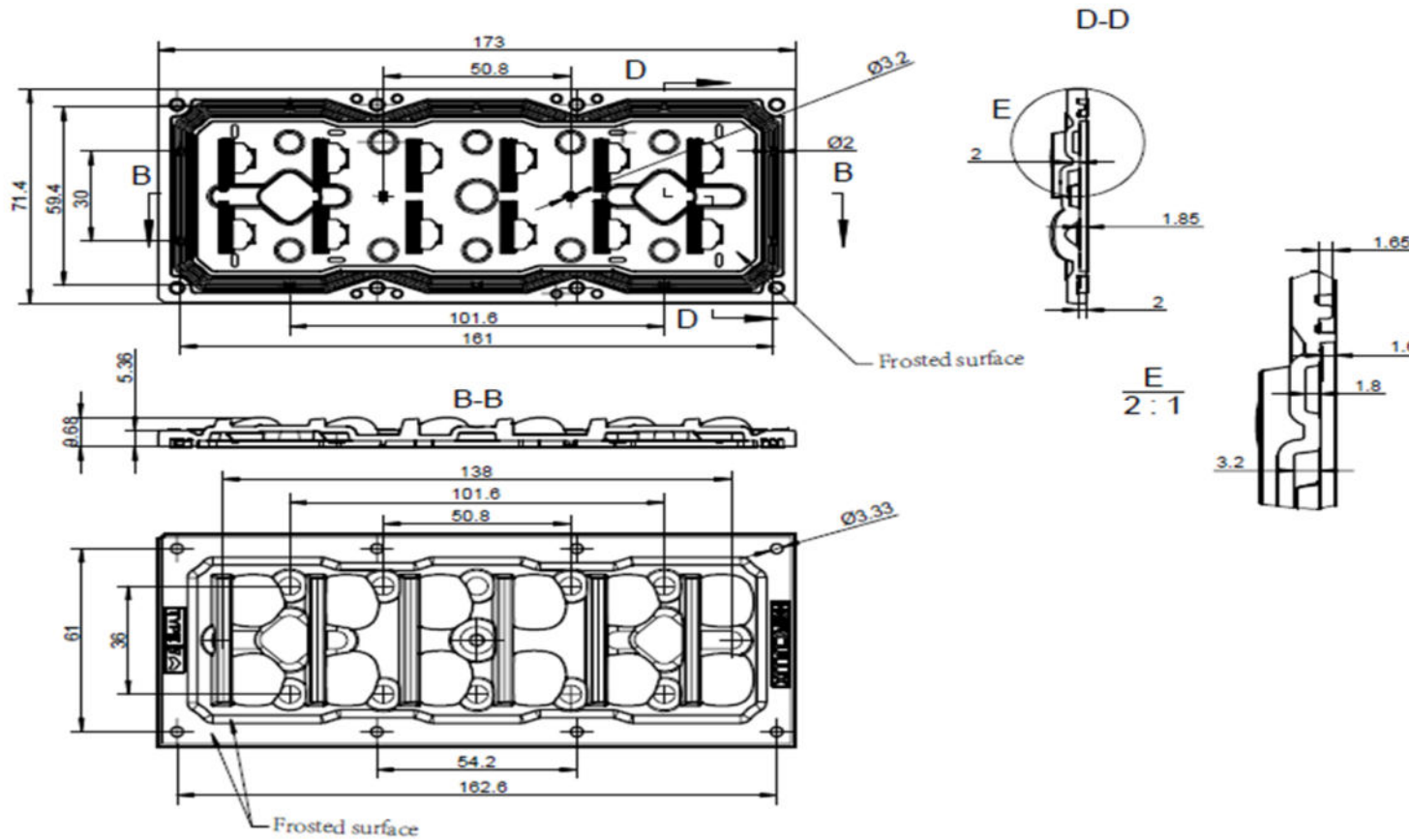


**Technical remark:**

1. The 3D map is not indicated for rounded corners and draft angle.
2. The dimensional tolerances are not specified according to GB/T 14486 2008 MT5.
3. The surface has no flash, shrinkage, bubbles and other defects.

Optical design			HK-173@12-60X150-5050-#0-1g-12	
structure design			HK 12in1-5050-TYPE3 lens	
Review			1.02.81415	
Validation			number of drawing	qty
				weight
			Material: PMMA/PC	
			CDHK	

MT5 Tolerance table (mm)	Basic size	<3	3~10	24~65	65~140	140~250	250~450	>450
	olerance value	±0.1	±0.15	±0.35	±0.50	±0.80	±1.2	±2.0

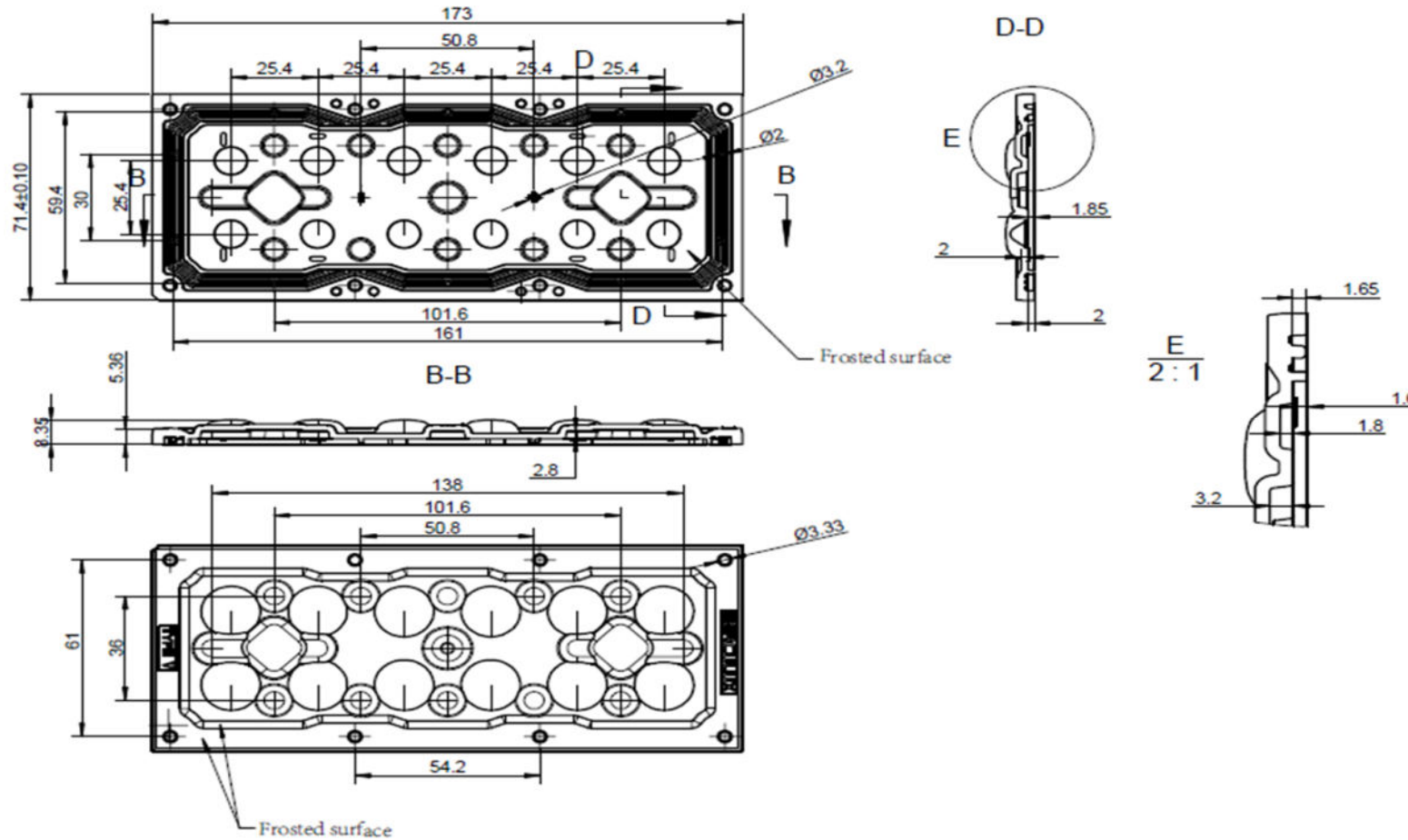


**Technical remark:**

1. The 3D map is not indicated for rounded corners and draft angle.
2. The dimensional tolerances are not specified according to GB/T 14486 2008 MT5.
3. The surface has no flash, shrinkage, bubbles and other defects.

Optical design			HK 12in1-TYPEIV lens		HK-173@10-30X140-5050-#0-1g-12		
structure design			HK 12in1-TYPEIV lens		1.02.81482		
Review					number of drawing	qty	weight
Validation			Material:	PMMA/PC	CDHK		

MT5 Tolerance table (mm)	Basic size	<3	3~10	24~65	65~140	140~250	250~450	>450	
	olerance value	±0.1	±0.15	±0.35	±0.50	±0.80	±1.2	±2.0	



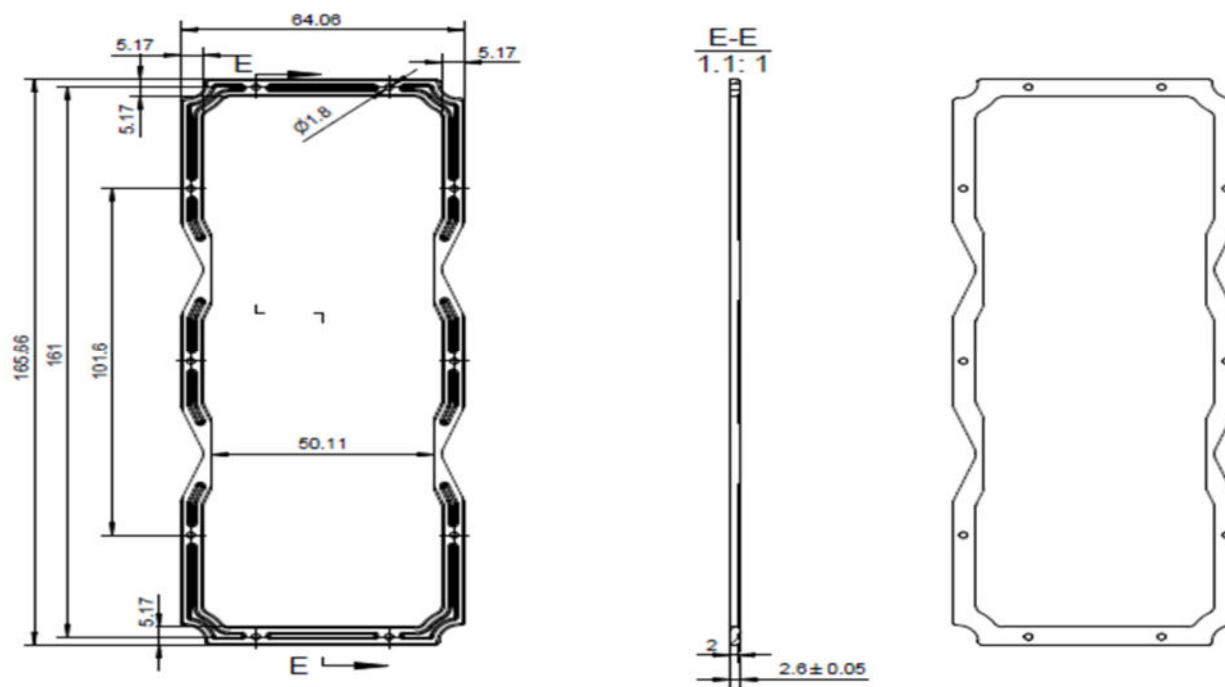
**Technical remark:**

1. The 3D map is not indicated for rounded corners and draft angle.
2. The dimensional tolerances are not specified according to GB/T 14486 2008 MT5.
3. The surface has no flash, shrinkage, bubbles and other defects.

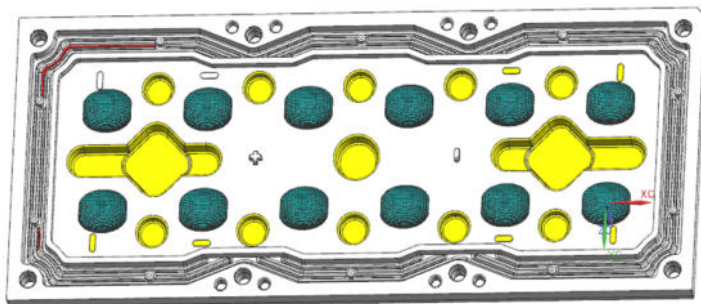
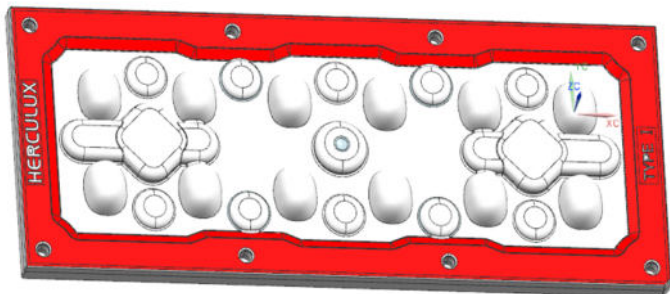
Optical design			HK-173@08-140-5050-#0-1g-12	
structure design			HK 12in1-TYPE V lens	
Review			number of drawing	1.02.81453
Validation			qty	weight
			Material: PMMA/PC	
			CDHK	

MT5 Tolerance table (mm)	Basic size	Tolerance value						
		<3	3~10	24~65	65~140	140~250	250~450	>450
		±0.1	±0.15	±0.35	±0.50	±0.80	±1.2	±2.0

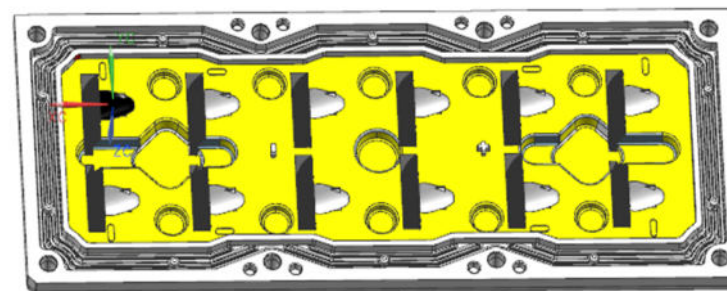
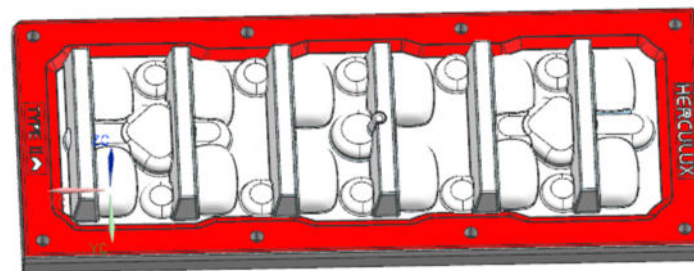




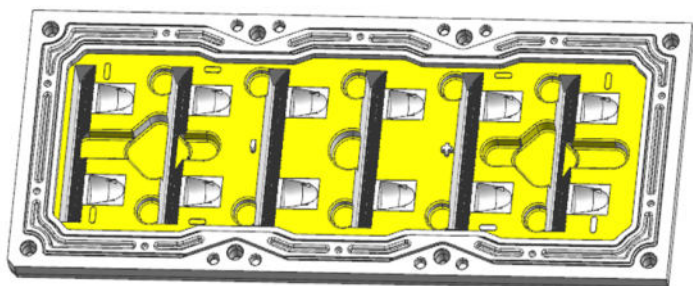
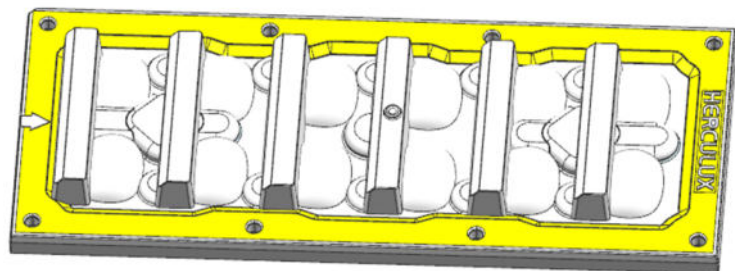
T1



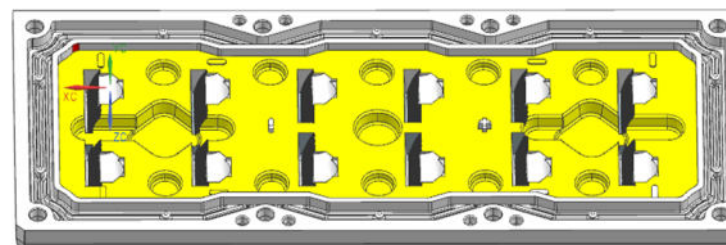
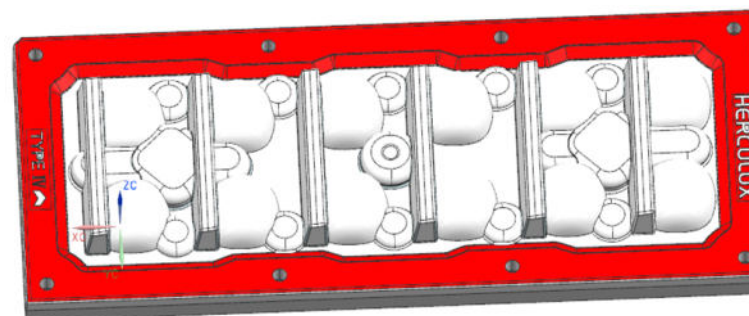
T2



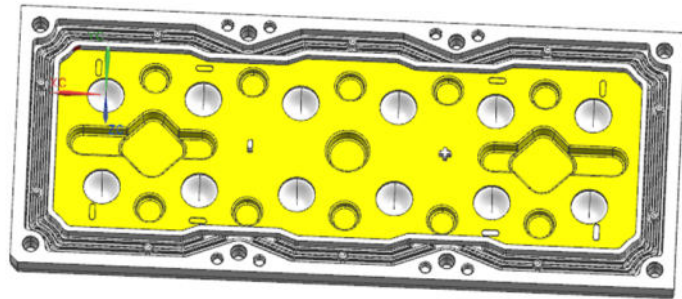
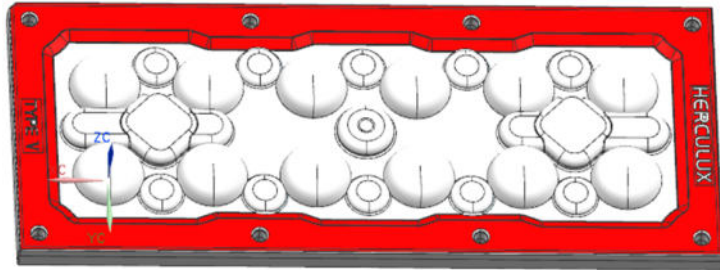
T3



T4

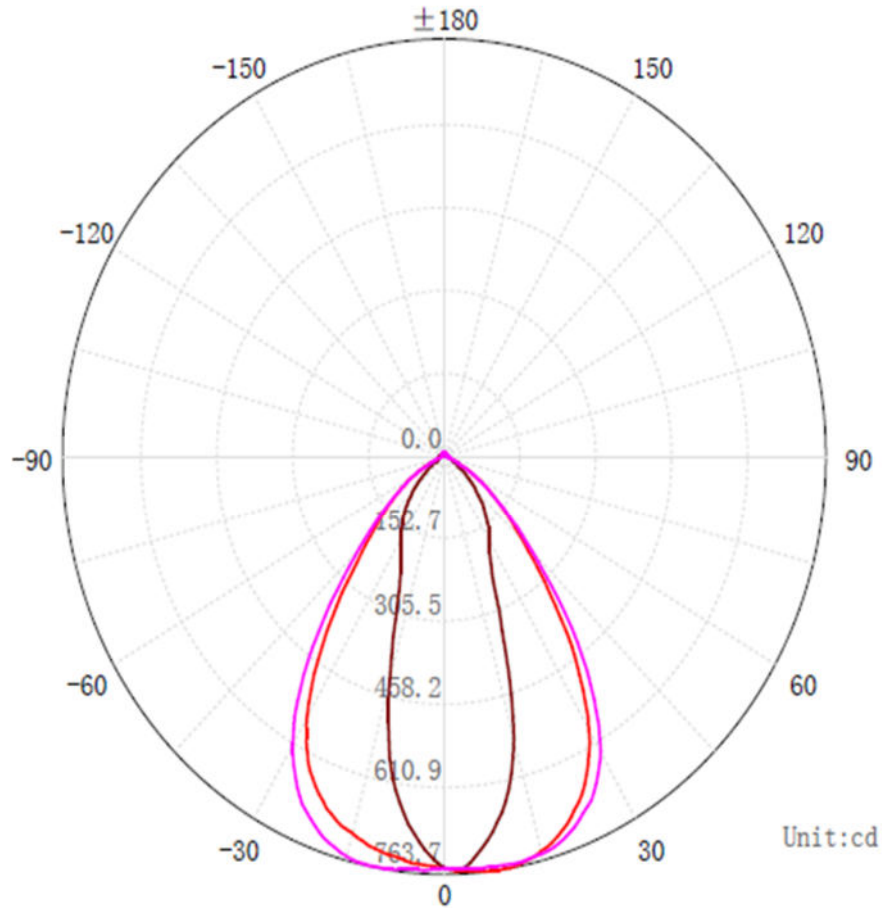


T5

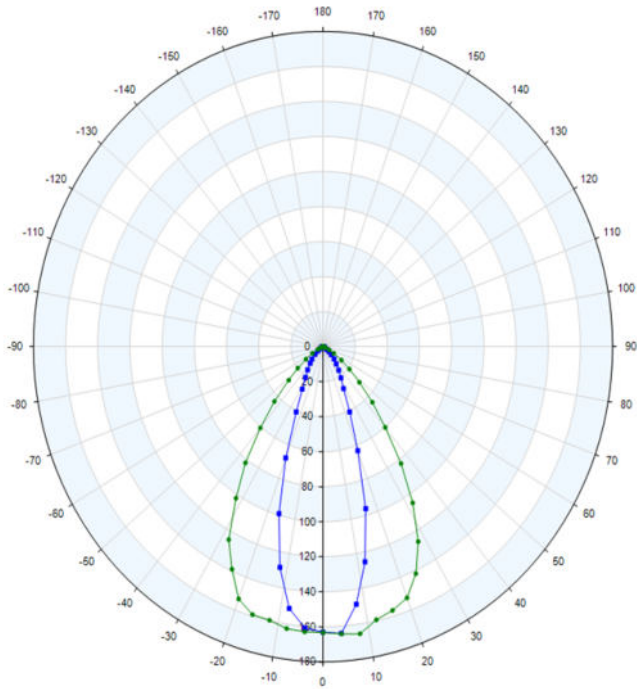




## C Plane Distribution Diagram

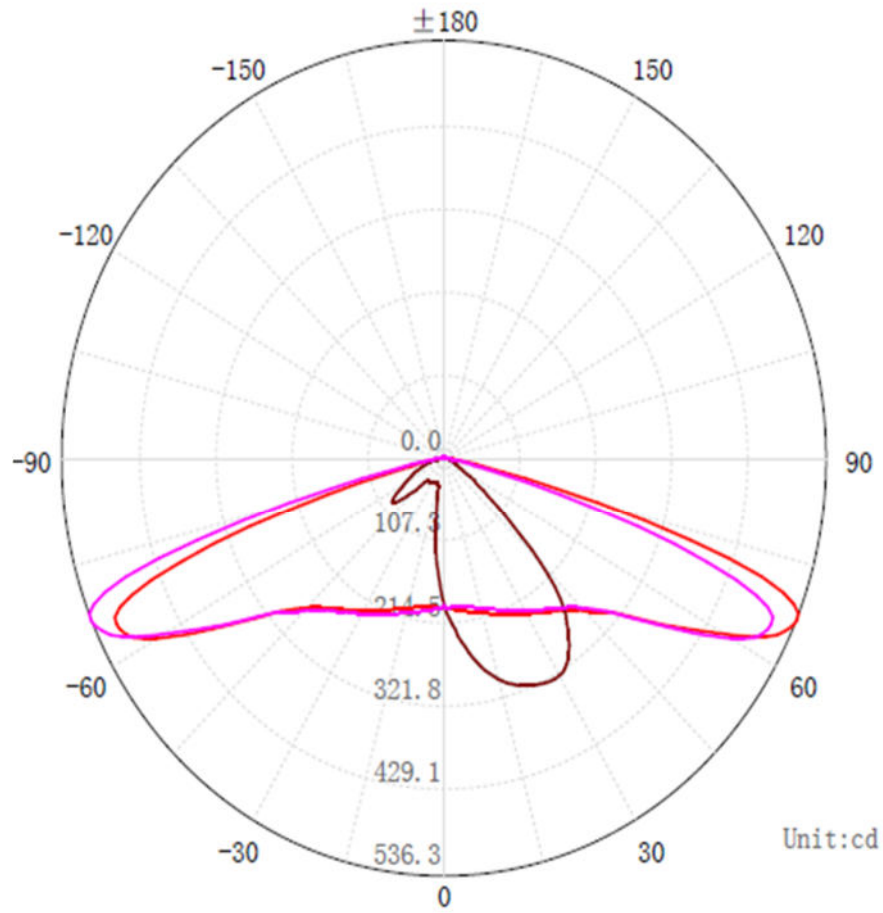


C Plane	[50%MaxAng.]	[10%MaxAng.]
C285.0_105.0:	74.5	117.6
C0.0_180.0 :	35.1	94.0
C90.0_270.0 :	78.6	117.5



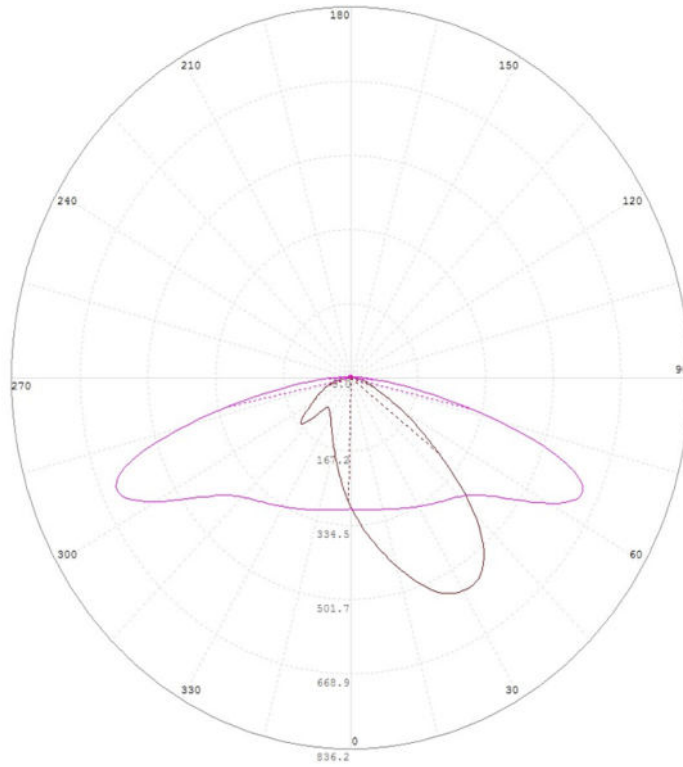


## C Plane Distribution Diagram



C Plane	[50%MaxAng.]	[10%MaxAng.]
C270.0_90.0 :	146.7	157.1
C0.0_180.0 :	48.6	129.2
C90.0_270.0 :	146.7	157.1

Plane [50%Ang.] [10%Ang.]  
C0.0: 53.0 142.4  
C90.0: 155.9 172.9



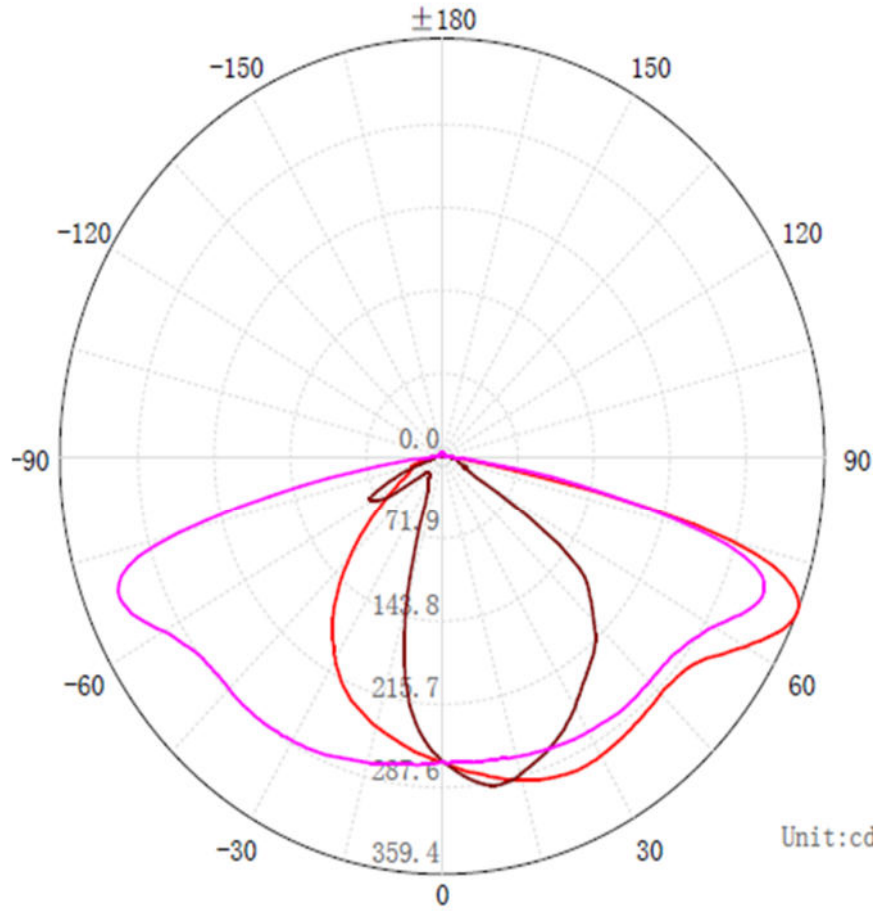
Date updated:

2023/9/25

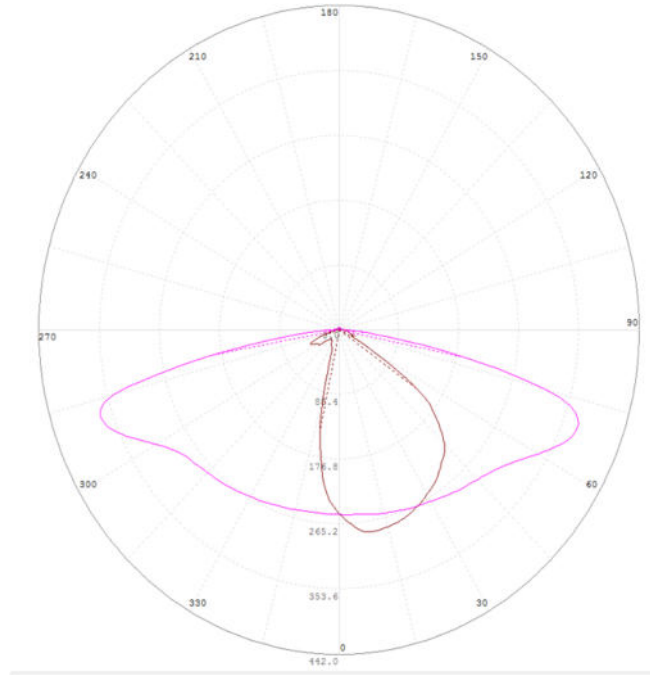




## C Plane Distribution Diagram

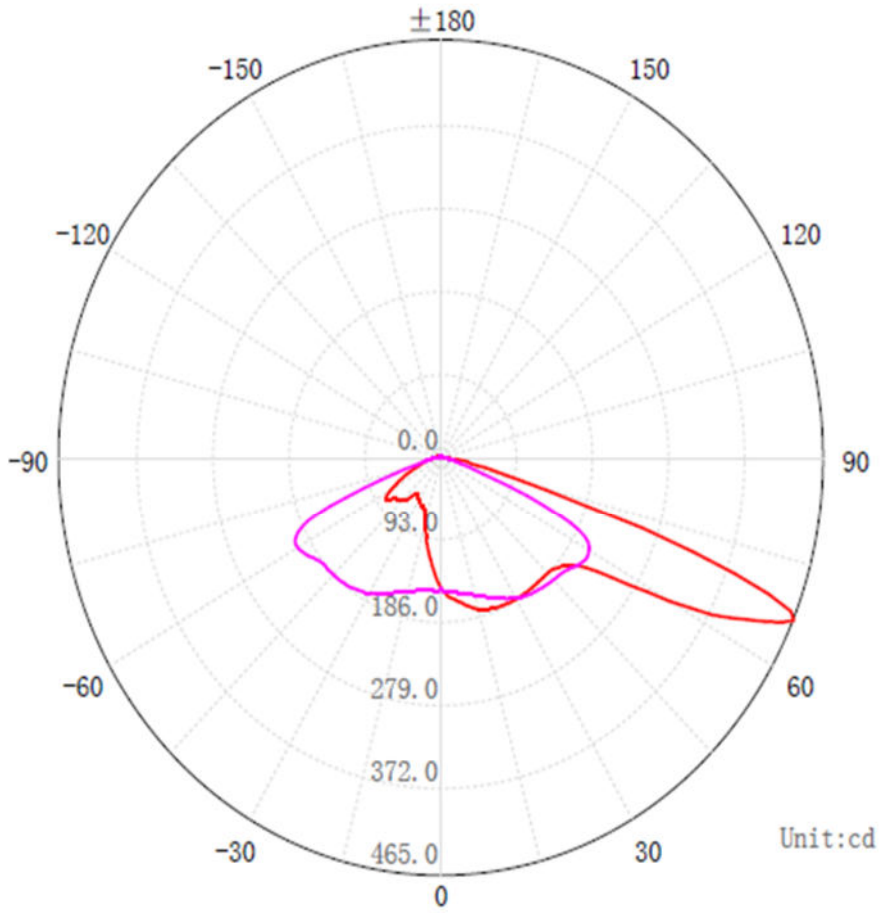


C Plane	[50%MaxAng.]	[10%MaxAng.]
C292.5_112.5:	112.2	145.3
C0.0_180.0 :	68.1	132.7
C90.0_270.0 :	156.0	167.2

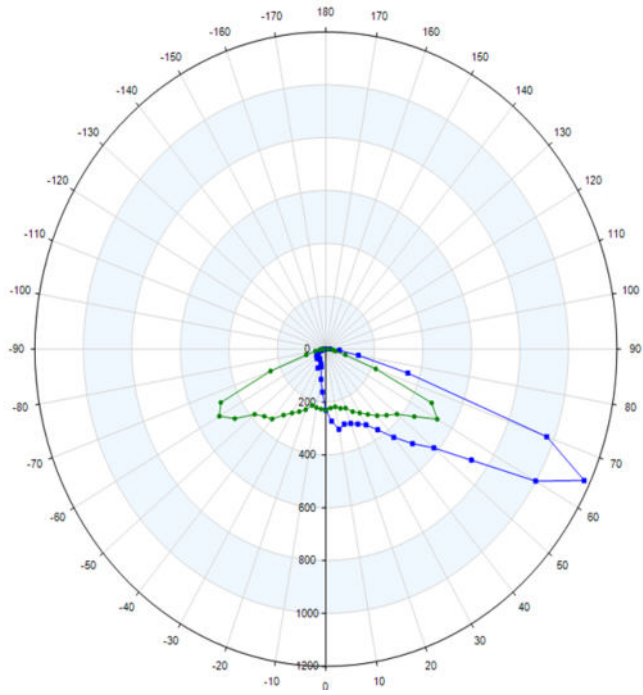




### C Plane Distribution Diagram

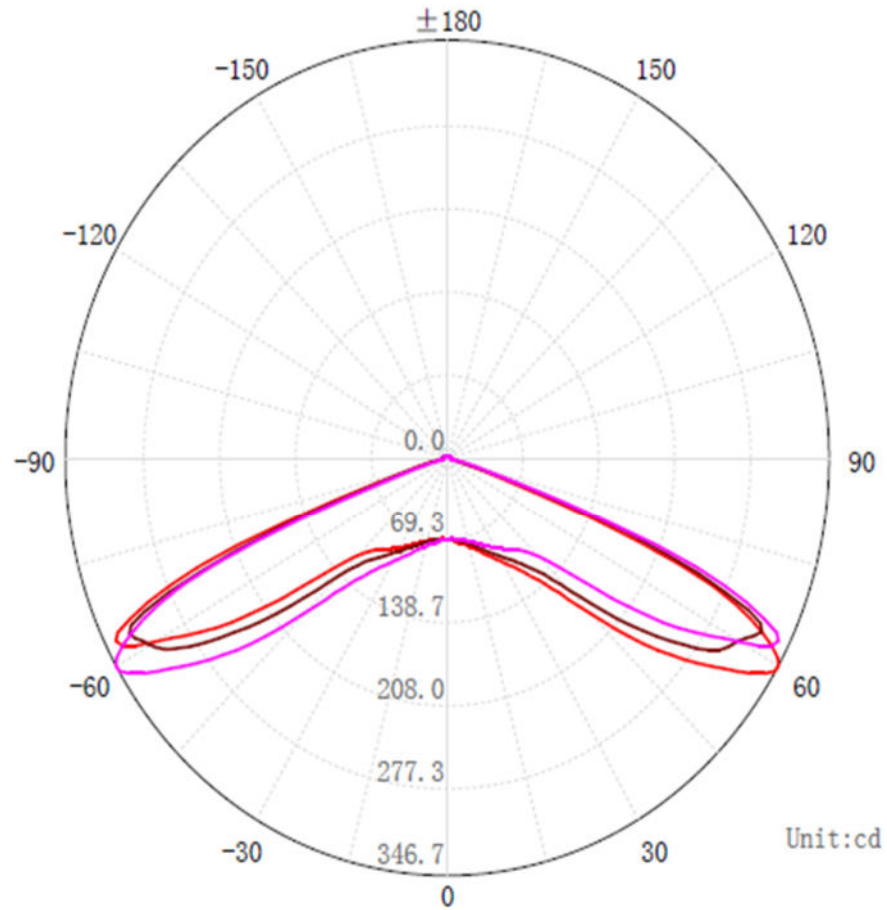


C Plane		[50%MaxAng.]	[10%MaxAng.]
—	C0.0_180.0 :	16.2	144.2
—	C90.0_270.0 :	138.1	153.3

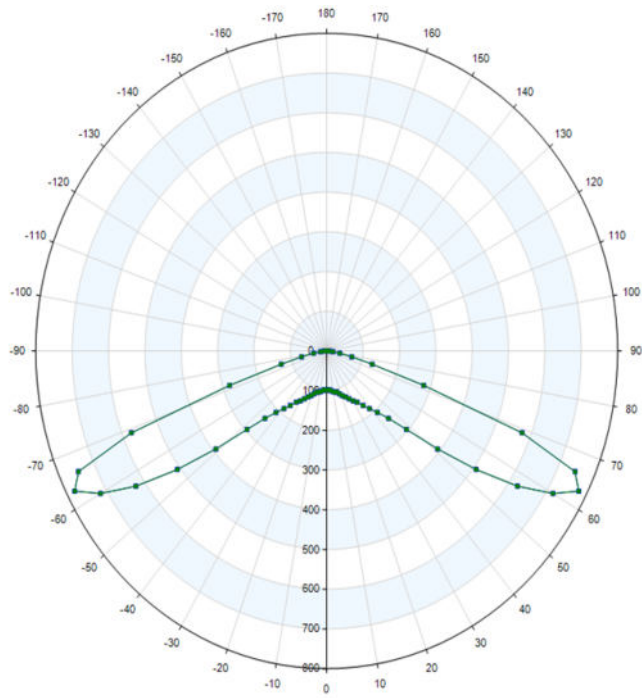


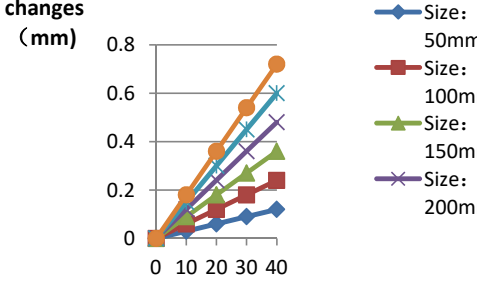
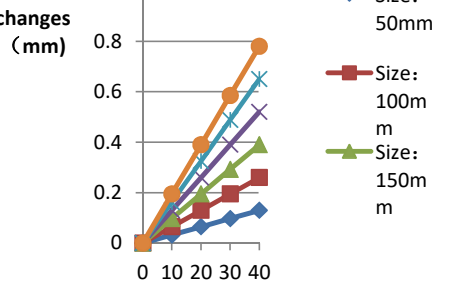


## C Plane Distribution Diagram



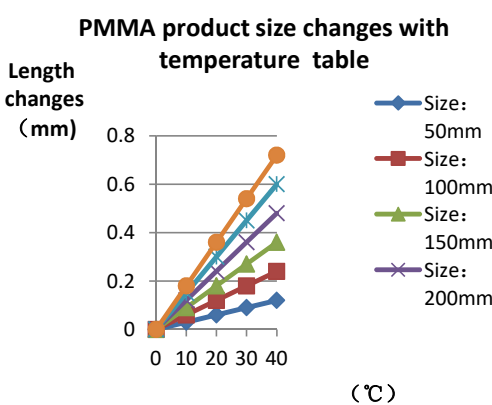
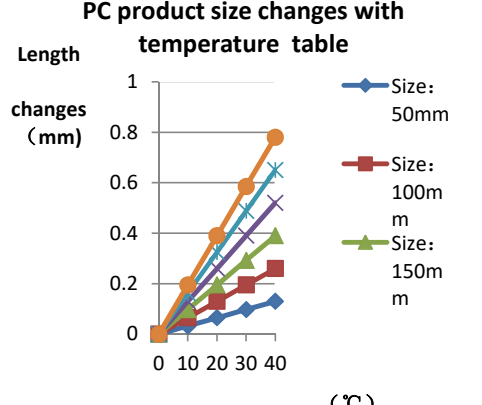
C Plane	[50%MaxAng.]	[10%MaxAng.]
C270.0_90.0 :	137.9	145.4
C0.0_180.0 :	138.4	145.9
C90.0_270.0 :	137.9	145.4

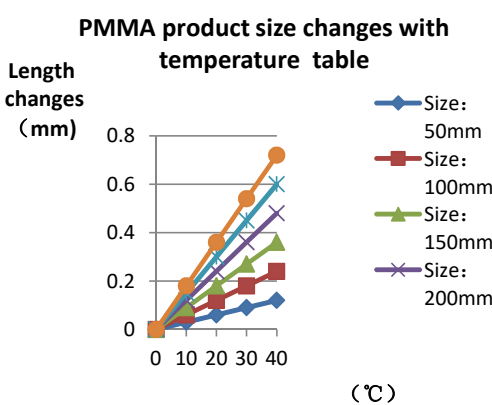
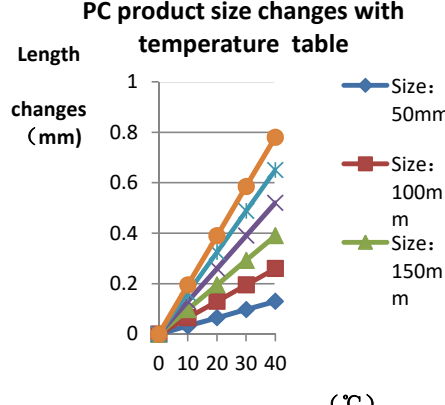


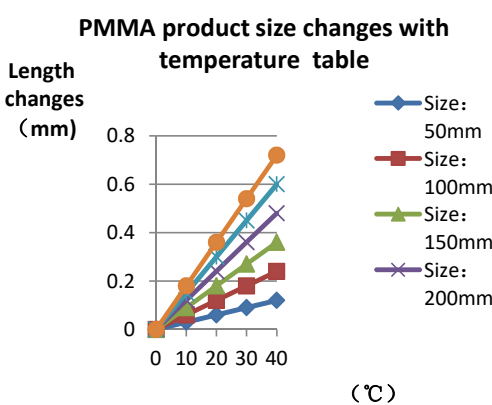
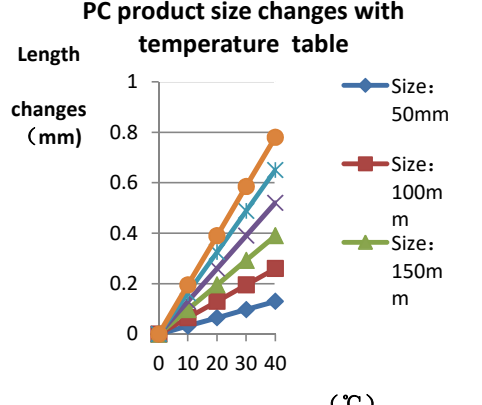
	Standard size	Upper Size limit	Lower size limit	Test result1	Test result2	Test result3	Test result4	Judgment	Remarks	
1.Size	length	173			173.13				Test environment: In 20 °C -25 °C environment to achieve thermal equilibrium after the test.	
	Breadch	71.4			71.4					
	Threaded hole	3.33			3.21					
	Pitch-row 1	54.2			54.3					
	Pitch-row 2	61			60.97					
	Pitch-row 3	162.6			162.75					
Gate shear can not affect the appearance of the lamp										
See attachment "Appearance Inspection Standards"										
2.Appearance Quality	See attachment "Appearance Inspection Standards"	E	No burr	No burr	No burr	No burr	OK			
			No stains	No stains	No stains	No stains				
3.Material	PMMA/PC			Color	Transparent		OK			
4.Optical index	Testing LED	LUXEON 5050								
	The recommended size and power rating of the LED light source recommended for this lens should be comparable to the source of the test, if it is required to be out of range. According to the heat dissipation capability of the lamp and the actual conditions of the use environment, the lens should be fully tested and tested to prevent the lens life.									
	FWHM	See light distribution curve								
	angle	PMMA			35.1x74.5					
	K-value									
	Efficiency									
Facula	See the signature sample									
Comprehensive judgment	Qualified									
Remarks: 1、Tool Number: V-Vernier Caliper 2D-Quadratic H-Height Gauge M-Tool Microscope P-Needle T-Thick Gauge R-Radius Gauge E-Visual. 2、Ambient temperature on the size of the product refer to the table on the right	<b>PMMA product size changes with temperature table</b> Length changes (mm) vs (°C)				<b>PC product size changes with temperature table</b> Length changes (mm) vs (°C)					
										
<b>Precautions:</b> 1、Wear clean gloves during lens assembly to prevent contamination of the lens surface. 2、Take the lens try to avoid touching the total reflection surface. 3、When the lens surface contamination, you can only gently wipe with soft cotton sticky neat neutral solvent, not allowed to wipe with industrial solvents. 4、The working temperature of the lens should be within the temperature limit of the lens material. Exceeding the temperature limit will cause damage to the lens and affect the service life of the lens.										

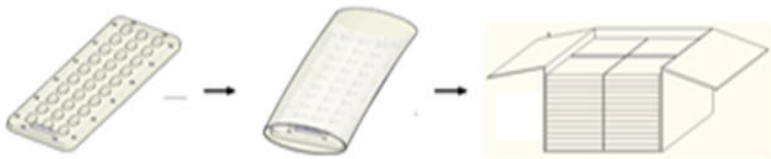
	Standard size	Upper Size limit	Lower size limit	Test result1	Test result2	Test result3	Test result4	Judgment	Remarks	
1.Size	length	173			172.94				Test environment: In 20 °C -25 °C environment to achieve thermal equilibrium after the test.	
	Breadch	71.4			71.32					
	Threaded hole	3.33			3.31					
	Pitch-row 1	54.2			54.2					
	Pitch-row 2	61			60.91					
	Pitch-row 3	162.6			162.56					
Gate shear can not affect the appearance of the lamp										
See attachment "Appearance Inspection Standards"										
2.Appearance Quality	See attachment "Appearance Inspection Standards"	E	No burr	No burr	No burr	No burr	OK			
			No stains	No stains	No stains	No stains				
3.Material	PMMA/PC			Color	Transparent			OK		
4.Optical index	Testing LED	LUXEON 5050								
	The recommended size and power rating of the LED light source recommended for this lens should be comparable to the source of the test, if it is required to be out of range. According to the heat dissipation capability of the lamp and the actual conditions of the use environment, the lens should be fully tested and tested to prevent the lens life.									
	FWHM	See light distribution curve								
	angle	PMMA			48.6x146.7					
	K-value									
	Efficiency									
Facula	See the signature sample									
Comprehensive judgment	Qualified									
Remarks: 1、 Tool Number: V-Vernier Caliper 2D-Quadratic H-Height Gauge M-Tool Microscope P-Needle T-Thick Gauge R-Radius Gauge E-Visual. 2、 Ambient temperature on the size of the product refer to the table on the right	<b>PMMA product size changes with temperature table</b> Length changes (mm) vs (°C)				<b>PC product size changes with temperature table</b> Length changes (mm) vs (°C)					
<b>Precautions:</b> 1、 Wear clean gloves during lens assembly to prevent contamination of the lens surface. 2、 Take the lens try to avoid touching the total reflection surface. 3、 When the lens surface contamination, you can only gently wipe with soft cotton sticky neat neutral solvent, not allowed to wipe with industrial solvents. 4、 The working temperature of the lens should be within the temperature limit of the lens material. Exceeding the temperature limit will cause damage to the lens and affect the service life of the lens.										

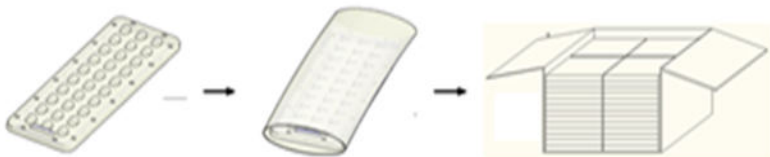


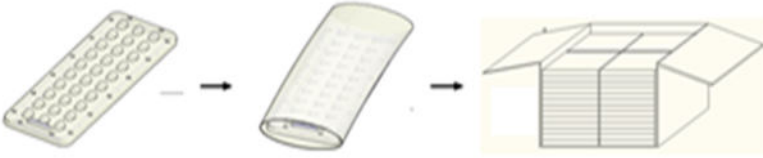
	Standard size	Upper Size limit	Lower size limit	Test result1	Test result2	Test result3	Test result4	Judgment	Remarks
1.Size	length	173			173.2				Test environment: In 20 °C -25 °C environment to achieve thermal equilibrium after the test.
	Breadch	71.4			71.4				
	Threaded hole	3.33			3.3				
	Pitch-row 1	54.2			54.35				
	Pitch-row 2	61			61				
	Pitch-row 3	162.6			162.85				
Gate shear can not affect the appearance of the lamp									
See attachment "Appearance Inspection Standards"									
2.Appearance Quality	See attachment "Appearance Inspection Standards"	E	No burr	No burr	No burr	No burr	OK		
			No stains	No stains	No stains	No stains			
3.Material	PMMA/PC			Color	Transparent			OK	
4.Optical index	Testing LED	LUXEON 5050							
	The recommended size and power rating of the LED light source recommended for this lens should be comparable to the source of the test, if it is required to be out of range. According to the heat dissipation capability of the lamp and the actual conditions of the use environment, the lens should be fully tested and tested to prevent the lens life.								
	FWHM	See light distribution curve							
	angle	PMMA 68.3x156							
	K-value								
	Efficiency								
Facula	See the signature sample								
Comprehensive judgment	Qualified								
Remarks: 1、Tool Number: V-Vernier Caliper 2D-Quadratic H-Height Gauge M-Tool Microscope P-Needle T-Thick Gauge R-Radius Gauge E-Visual. 2、Ambient temperature on the size of the product refer to the table on the right	<b>PMMA product size changes with temperature table</b> Length changes (mm) 				<b>PC product size changes with temperature table</b> Length changes (mm) 				
	Precautions: 1、Wear clean gloves during lens assembly to prevent contamination of the lens surface. 2、Take the lens try to avoid touching the total reflection surface. 3、When the lens surface contamination, you can only gently wipe with soft cotton sticky neat neutral solvent, not allowed to wipe with industrial solvents. 4、The working temperature of the lens should be within the temperature limit of the lens material. Exceeding the temperature limit will cause damage to the lens and affect the service life of the lens.								

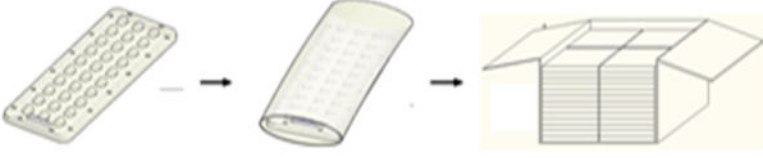
	Standard size	Upper Size limit	Lower size limit	Test result1	Test result2	Test result3	Test result4	Judgment	Remarks
1.Size	length	173			173.03				Test environment: In 20 °C -25 °C environment to achieve thermal equilibrium after the test.
	Breadch	71.4			71.39				
	Threaded hole	3.33			3.19				
	Pitch-row 1	54.2			54.24				
	Pitch-row 2	61			60.99				
	Pitch-row 3	162.6			162.66				
Gate shear can not affect the appearance of the lamp									
See attachment "Appearance Inspection Standards"									
2.Appearance Quality	See attachment "Appearance Inspection Standards"	E	No burr	No burr	No burr	No burr	OK		
			No stains	No stains	No stains	No stains			
3.Material	PMMA/PC			Color	Transparent		OK		
4.Optical index	Testing LED	LUXEON 5050							
	The recommended size and power rating of the LED light source recommended for this lens should be comparable to the source of the test, if it is required to be out of range. According to the heat dissipation capability of the lamp and the actual conditions of the use environment, the lens should be fully tested and tested to prevent the lens life.								
	FWHM	See light distribution curve							
	angle	PMMA 16.2x138.1							
	K-value								
	Efficiency								
Facula	See the signature sample								
Comprehensive judgment	Qualified								
Remarks: 1、Tool Number: V-Vernier Caliper 2D-Quadratic H-Height Gauge M-Tool Microscope P-Needle T-Thick Gauge R-Radius Gauge E-Visual. 2、Ambient temperature on the size of the product refer to the table on the right	<b>PMMA product size changes with temperature table</b> Length changes (mm) vs (°C)				<b>PC product size changes with temperature table</b> Length changes (mm) vs (°C)				
									
Precautions: 1、Wear clean gloves during lens assembly to prevent contamination of the lens surface. 2、Take the lens try to avoid touching the total reflection surface. 3、When the lens surface contamination, you can only gently wipe with soft cotton sticky neat neutral solvent, not allowed to wipe with industrial solvents. 4、The working temperature of the lens should be within the temperature limit of the lens material. Exceeding the temperature limit will cause damage to the lens and affect the service life of the lens.									

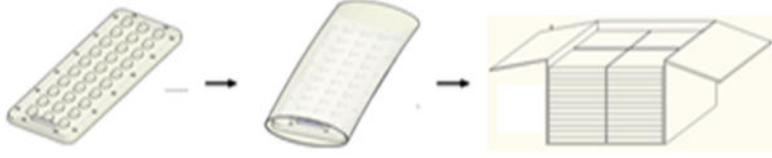
	Standard size	Upper Size limit	Lower size limit	Test result1	Test result2	Test result3	Test result4	Judgment	Remarks	
1.Size	length	173			172.8				Test environment: In 20 °C -25 °C environment to achieve thermal equilibrium after the test.	
	Breadch	71.4			71.2					
	Threaded hole	3.33			3.23					
	Pitch-row 1	54.2			54					
	Pitch-row 2	61			60.8					
	Pitch-row 3	162.6			162.3					
Gate shear can not affect the appearance of the lamp										
See attachment "Appearance Inspection Standards"										
2.Appearance Quality	See attachment "Appearance Inspection Standards"	E	No burr	No burr	No burr	No burr	OK			
			No stains	No stains	No stains	No stains				
3.Material	PMMA/PC			Color	Transparent			OK		
4.Optical index	Testing LED	LUXEON 5050								
	The recommended size and power rating of the LED light source recommended for this lens should be comparable to the source of the test, if it is required to be out of range. According to the heat dissipation capability of the lamp and the actual conditions of the use environment, the lens should be fully tested and tested to prevent the lens life.									
	FWHM	See light distribution curve								
	angle	PMMA			138.6°					
	K-value									
	Efficiency									
Facula	See the signature sample									
Comprehensive judgment										
Remarks:	<p>1、 Tool Number: V-Vernier Caliper 2D-Quadratic H-Height Gauge M-Tool Microscope P-Needle T-Thick Gauge R-Radius Gauge E-Visual.</p> <p>2、 Ambient temperature on the size of the product refer to the table on the right</p>									
	<p><b>PMMA product size changes with temperature table</b></p> 				<p><b>PC product size changes with temperature table</b></p> 					
Precautions:	<p>1、 Wear clean gloves during lens assembly to prevent contamination of the lens surface.</p> <p>2、 Take the lens try to avoid touching the total reflection surface.</p> <p>3、 When the lens surface contamination, you can only gently wipe with soft cotton sticky neat neutral solvent, not allowed to wipe with industrial solvents.</p> <p>4、 The working temperature of the lens should be within the temperature limit of the lens material. Exceeding the temperature limit will cause damage to the lens and affect the service life of the lens.</p>									

PN		HK-173@10-40X80-5050-#0-1g-12		Product Name		HK 12in1-TYPE I lens	
Product material		PMMA/PC		Code		1.02.81467	
Package diagram							
Product packing		2	PCS/BAG	76	PCS/LAYER		
		4	Layer/Box	244	Piece/Box		
Packaging Materials	NO.	Material Code	Item name	Specification	Single box usage	Unit	Remarks
	1	—	Plastic bags	—	122	BAG	
	2	2.06.0005	Box label	6.2cm*7.6cm	1	PCS	
	3	2.06.0007	Partition	39*29cm	5	PCS	
	4	2.06.00012	Carton	40*30*26cm	1	PCS	
Remarks	<p>1. Loose packaging is not limited by this specification</p> <p>2. Without rubber rings: 38 bags per layer for the bottom three layers, 8 bags for the top layer, and a total of 244 bags per box</p> <p>3. Rubber ring installation: 30 bags per layer for the bottom three layers, 8 bags for the top layer, and a total of 196 bags per box</p>						

PN		HK-173@11-50x148-5050-#0-1g-12		Product Name		HK 12in1-TYPE II lens	
Product material		PMMA/PC		Code		1.02.81489	
Package diagram							
Product packing		2	PCS/BAG	60	PCS/LAYER		
		3	Layer/Box	180	Piece/Box		
Packaging Materials	NO.	Material Code	Item name	Specification	Single box usage	Unit	Remarks
	1	—	Plastic bags	—	90	BAG	
	2	2.06.0005	Box label	6.2cm*7.6cm	1	PCS	
	3	2.06.0007	Partition	39*29cm	4	PCS	
	4	2.06.00012	Carton	40*30*26cm	1	PCS	
Remarks	<p>1. Loose packaging is not limited by this specification</p> <p>2. Without rubber rings: 30 bags per layer for the bottom three layers, 8 bags for the top layer, and a total of 196 bags per box</p> <p>3. Rubber ring installation: 30 bags per layer for the bottom three layers, with a total of 180 pieces per box</p>						

PN		HK-173@12-60X150-5050-#0-1g-12		Product Name		HK 12in1-5050-TYPE3 lens	
Product material		PMMA/PC		Code		1.02.81415	
Package diagram							
Product packing		2	PCS/BAG	56	PCS/LAYER		
		4	Layer/Box	184	Piece/Box		
Packaging Materials	NO.	Material Code	Item name	Specification	Single box usage	Unit	Remarks
	1	—	Plastic bags	—	92	BAG	
	2	2.06.0005	Box label	6.2cm*7.6cm	1	PCS	
	3	2.06.0007	Partition	39*29cm	5	PCS	
	4	2.06.00012	Carton	40*30*26cm	1	PCS	
Remarks	1. Loose packaging is not limited by this specification 2. Rubber ring installation: 28 bags per layer for the lower three layers, and 8 bags per layer for the upper layer, totaling 184 pieces per box						

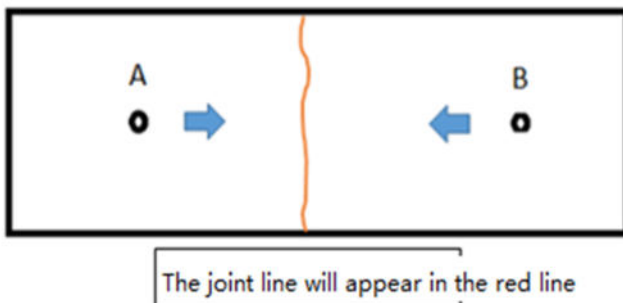
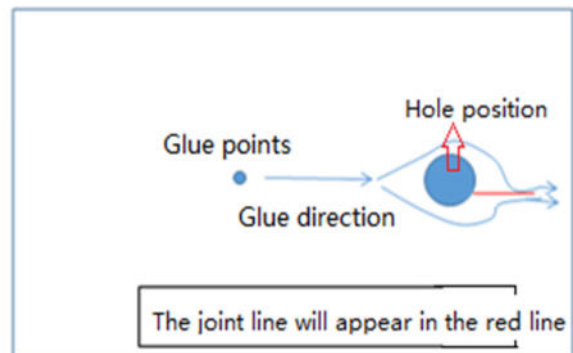
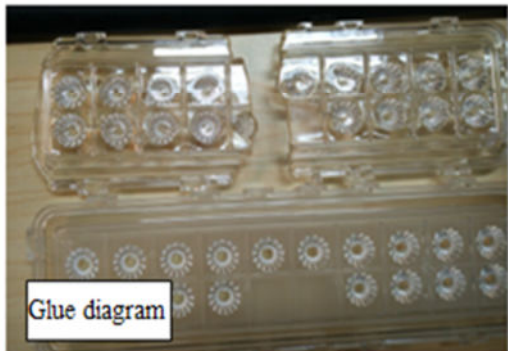
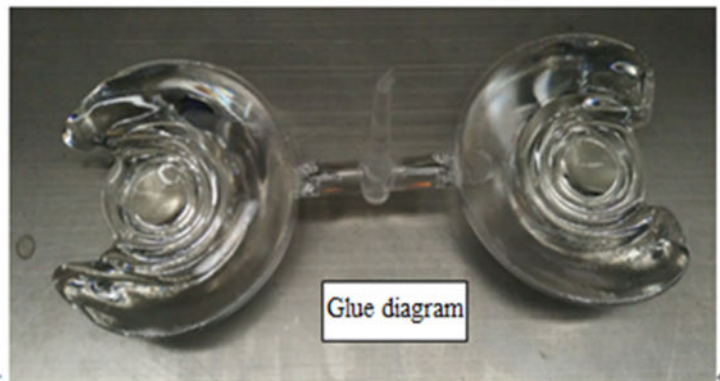
PN		HK-173@10-30X140-5050-#0-1g-12		Product Name		HK 12in1-TYPEIV lens	
Product material		PMMA/PC		Code		1.02.81482	
Package diagram							
Product packing		2	PCS/BAG	60	PCS/LAYER		
		4	Layer/Box	196	Piece/Box		
Packaging Materials	NO.	Material Code	Item name	Specification	Single box usage	Unit	Remarks
	1	—	Plastic bags	—	98	BAG	
	2	2.06.0005	Box label	6.2cm*7.6cm	1	PCS	
	3	2.06.0007	Partition	39*29cm	5	PCS	
	4	2.06.00012	Carton	40*30*26cm	1	PCS	
Remarks	1. Loose packaging is not limited by this specification 2. Without rubber rings: 33 bags per layer for the bottom three layers, 8 bags for the top layer, and a total of 214 bags per box 3. Rubber ring installation: 30 bags per layer for the bottom three layers, 8 bags for the top layer, and a total of 196 bags per box						

PN	HK-173@08-140-5050-#0-1g-12		Product Name	HK 12in1-TYPE V lens			
Product material	PMMA/PC		Code	1.02.81453			
Package diagram							
Product packing	2	PCS/BAG	74	PCS/LAYER			
	4	Layer/Box	238	Piece/Box			
Packaging Materials	NO.	Material Code	Item name	Specification	single box usag	Unit	Remarks
	1	—	Plastic bags	—	119	BAG	
	2	2.06.0005	Box label	6.2cm*7.6cm	1	PCS	
	3	2.06.0007	Partition	39*29cm	5	PCS	
	4	2.06.00012	Carton	40*30*26cm	1	PCS	
Remarks	1. Loose packaging is not limited by this specification 2. Rubber ring installation: 37 bags per layer for the bottom three layers, 8 bags for the top layer, and a total of 238 bags per box						

Special notice

When glue pass through holes, columns and other structures, or part of the thin structure, will form a weld line. The product which uses multi-point injection welding line will appear because of the combination of sol, as shown below:

Syntner



Please note:

The appearance of lines in the structure of the product as well as at the screw hole is a normal phenomenon, will not affect the actual use of the product, and can not be avoided at this stage.

## Appearance inspection standards

### 1 Operating procedures

#### 1.1.1 Sampling standards, sampling plan and AQL

Test level: GB/T2828.1-2012 The first part is according to the acceptance quality limit (AQL) retrieval batch inspection sampling plan, general inspection level II level, CR class defect coefficient 0, MA defect rejection level AQL = 0.65, MI class defect rejection level AQL = 1.0; defect level please see 5.4.

### 2 Code table

Code	Code description	Unit	Code		Code description	Unit
N	Amount/pcs	pcs	D		Diameter	mm
L	Length	mm	H		Depth	mm
W	Width	mm	DS		Distance	mm
S	Proportion	mm <sup>2</sup>	SS		Offset	mm

### 3 Test conditions

3.1 Sight distance and working hours: Sight distance should be 30-35cm, each side of the inspection time does not exceed 12s, the visual angle of 45-135 degrees;

3.2 Light: 2x40w cool white fluorescent lamp, the light source is 500-550mm away from the lens surface; in order to make the appearance defect can be correctly recognized, the illumination should be 500-1000Lux, and the observation time is 10 seconds.

3.3 Visual inspection staff should be 1.0 (including corrected visual acuity) above, no color blindness, color weakness.

### 4 Appearance inspection standards

Test items	Judging standard	Inspection equipment	Defect level		
		Testing method	MI	MA	CR
Check the sample	When start the machine and process, all products have to check the appearance of the sample, the appearance of the sample is divided into qualified samples and limited samples.	Sample comparison , visual			√
	1: Qualified sample refers to the appearance and structure standard of the product which recognized by the client, the sample size should be confirmed before mass production;				



	2: The limited sample refers to the limit of a particular exceptionally developed sample. Limit the sample only for its specific point of exception to confirm; The priority is higher than the other criteria in this table. When there is a limited sample, the limit sample shall prevail.				
Raw edge	Not allowed to affect the size and assembly	Visual, point card		√	
Scratch	1: Non-optical surface and non-exposed surface scratches should be visually insignificant and the length is less than 1/10 of the maximum surface size.	Visual, point card, calipers		√	
Fingerprint	Fingerprints are not allowed on all products	Visual		√	
Foreign objects, black spots, white spots	The product may not be attached to foreign objects, including oil, fiber, dregs of water gap and so on				√
Deformation	Insufficient filling shall not affect the appearance of the assembly and the exposed surfaces.	Visual, feeler			√
Poor ejection	Products may not appear bad ejection, including no convex top, thimble printed on the assembly surface shall not be higher than the product surface, non-assembled surface thimble height should not exceed the product size tolerances; thimble printing should be less than the product surface and no more than 0.3; thimble surface treatment should be consistent with the product side.	Visual, point card		√	
	Ejection strain: the optical surface and the appearance of the exposed surface after assembly are not allowed to have a strain, and the structural surface does not allow visual obvious strain.				
Insufficient filling	Insufficient filling shall not affect the appearance of the assembly and the exposed surfaces, The signature sample shall prevail.	Visual, point card		√	
Shrink	When the entire surface of the product shrinks, the optical properties and dimensions must meet the requirements, and the visual will not significantly affect the appearance. Part shrink reference point defects	Visual, point card		√	
Flow marks, Welding line	1: Product does not allow the presence of flow marks and welding lines unless the structure can not be avoided;	Visual		√	
	2: The remaining flow marks shall not appear in the optical surface, a single $L \leq 10\text{mm}$ , no more than two				

Bubble	No bubbles are allowed	Visual		√	
Foreign objects, black spots, white spots	Not obvious or $D \leq 0.3\text{mm}$ black spots and foreign bodies in the area of 100x100mm not more than 1; Exceeded foreign matter black spots is judged bad.	Visual, point card	√		
Damaged	No damage is allowed	Visual			√
Cold glue	Optical surface may not have cold glue, non-optical surface cold glue should meet the visual is not obvious.	Visual	√		
Bad incision	1: Do not affect the product size, shall not penetrate the optical surface, the cut should be smooth;	Visual			√
	2: Laser cutting products, the optical surface burns shall not occur after the processing is completed. Beading must not affect product installation				
	3: Three molds and hot runner gate shall not appear residue.				
Scrub	Scrub surface should be uniform, off the scrub phenomenon should not be obvious , A single off scrub imprint requires $D \leq 1\text{ mm}$ and no more than 1 area within a 50x50 mm area	Visual		√	